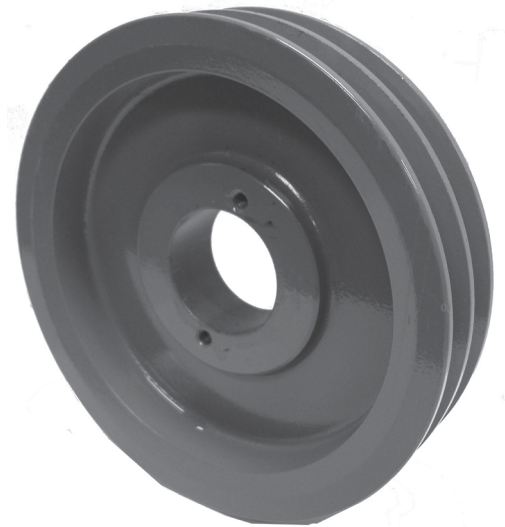


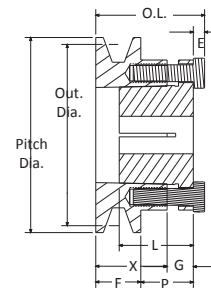
2AKH V-BELT SHEAVES

For 4L, 3L, or A Belts
2 Grooves
1.375" Face Width
Cast Iron
Split Taper Style
H Bushing

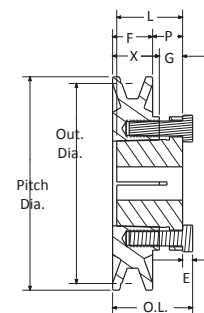


Part Number	Diameters			Type	Dimensions							Wt. Ea. (Lbs.)
	Out. Dia. (in)	Pitch Dia. "A"	Pitch Dia. "3L"		OAL	L	P	C	X	G	E	
2AK30H	3.050	2.800	2.460	1	2.438	1.250	0.875	0.938	0.875	0.438	0.188	1.4
2AK32H	3.250	3.000	2.660	1	2.438	1.250	0.875	0.938	0.875	0.438	0.188	1.7
2AK34H	3.450	3.200	2.860	1	2.000	1.250	0.438	0.500	0.875	0.438	0.188	1.8
2AK39H	3.750	3.500	3.160	1	2.000	1.250	0.438	0.500	0.875	0.438	0.188	1.8
2AK41H	3.950	3.700	3.360	2	1.500	1.250	0.063	-	0.875	0.438	0.188	1.9
2AK44H	4.250	4.000	3.660	2	1.500	1.250	0.063	-	0.875	0.438	0.188	2.4
2AK46H	4.450	4.200	3.860	2	1.500	1.250	0.063	-	0.875	0.438	0.188	2.5
2AK49H	4.750	4.500	4.160	2	1.500	1.250	0.063	-	0.875	0.438	0.188	3.1
2AK51H	4.950	4.700	4.360	2	1.500	1.250	0.063	-	0.875	0.438	0.188	3.2
2AK54H	5.250	5.000	4.660	2	1.500	1.250	0.063	-	0.875	0.438	0.188	3.4
2AK56H	5.450	5.200	4.860	2	1.500	1.250	0.063	-	0.875	0.438	0.188	3.6
2AK59H	5.750	5.500	5.160	3	1.500	1.250	0.063	0	0.875	0.438	0.188	3.4
2AK61H	5.950	5.700	5.360	3	1.500	1.250	0.063	0	0.875	0.438	0.188	3.3
2AK64H	6.250	6.000	5.660	3	1.500	1.250	0.063	0	0.875	0.438	0.188	3.9
2AK74H	7.250	7.000	6.660	3	1.500	1.250	0.063	0	0.875	0.438	0.188	4.9
2AK84H	8.250	8.000	7.660	3	1.500	1.250	0.063	0	0.875	0.438	0.188	5.8
2AK94H	9.250	9.000	8.660	3	1.500	1.250	0.063	0	0.875	0.438	0.188	6.1
2AK104H	10.250	10.000	9.660	3	1.500	1.250	0.063	0	0.875	0.438	0.188	7.7
2AK114H	11.250	11.000	10.660	3	1.500	1.250	0.063	0	0.875	0.438	0.188	8.5
2AK124H	12.250	12.000	11.660	3	1.500	1.250	0.063	0	0.875	0.438	0.188	9.5
2AK134H	13.250	13.000	12.660	3	1.500	1.250	0.063	0	0.875	0.438	0.188	11.4
2AK144H	14.250	14.000	13.660	3	1.500	1.250	0.063	0	0.875	0.438	0.188	11.9
2AK154H	15.250	15.000	14.660	3	1.500	1.250	0.063	0	0.875	0.438	0.188	13.3
2AK184H	18.250	18.000	17.660	3	1.500	1.250	0.063	0	0.875	0.438	0.188	16.8

TYPE 1



TYPE 2



TYPE 3

